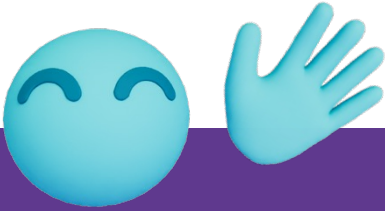




Medical Technologies

Get to know Buddy,  
your spirometry coach.



# EasyOne Sky

Redefining spirometry with Buddy

## The future of spirometry

Say goodbye to challenging spirometry procedures and say hello to Buddy, your partner in spirometry.

Buddy is designed to transform spirometry into a more enjoyable experience for patients and to streamline the process for healthcare providers – lowering the hurdle for high-quality spirometry.

Let **EasyOne Sky** transform spirometry testing into a seamless and enjoyable part of patient care.



EasyOne



Scan the QR code  
to see Buddy in  
action.



# Limitless. EasyOne Sky.

Hi, I am Buddy, your spirometry coach.

I am here to help you...

- demonstrate how to do a great test
- coach your patients
- give feedback
- obtain reliable and high-quality spirometry test results



## Specifications

**Test types:** FVC, FVL, Pre/Post-testing

**Languages:** English, Spanish

**Dimensions:** 4.3" x 3.3" x 1.3", 4.9 oz / 111 x 84 x 33 mm, 140 g

**Parameters:** BEV, FEF<sub>25</sub>, FEF<sub>25-75</sub>, FEF<sub>50</sub>, FEF<sub>75</sub>, FET, FEV<sub>0.75</sub>, FEV<sub>0.75</sub>/FVC, FEV<sub>1</sub>, FEV<sub>1</sub>/FVC, FEV<sub>1</sub>Q, FIVC, FVC, PEF, PIF, FVC %change, FEV1 %change

**Predicted normal values spirometry:** GLI (Quanjer) 2012, NHANES-III (Hankinson) 1999, Global GLI (Bowerman) 2023

**Data management:**  EasyOne Mobile

**App compatibility:**  Windows  

## Article numbers \*

**2800-1D** EasyOne Sky incl. BLE Dongle for PC use

**2800-1M** EasyOne Sky

**2800-50.1sp** EasyOne Sky BLE Dongle

**5050-50** EasyOne FlowTube box of 50

**5050-200** EasyOne FlowTube box of 200

**5050-500** EasyOne FlowTube box of 500

\* Not available in all countries



Medical Technologies

n d d Medical Technologies  
300 Brickstone Square, Suite 604 Andover, MA, 01810 USA  
Phone: +1 978 470 0923

n d d Medizintechnik AG  
Technoparkstrasse 1, CH-8005 Zurich, Switzerland  
Phone: +41 44 512 65 00



  
**TrueFlow**  
*makes the difference*

n d d's unique ultrasonic flow measurement is highly accurate in all flow ranges, independent of gas composition, pressure, temperature and humidity.

n d d **TrueFlow** is a hygienic and resistance-free solution that does not require calibration during its lifetime.

  
**n d dCloud**  
*simplifying workflows*

n d d's modern and secure connectivity solution is designed to connect to healthcare platforms and EHR/EMR systems. It is built on state-of-the-art cybersecurity standards.

SCAN ME



ID: LP-0000014 Rev: 00  
© Copyright 2024. All rights reserved