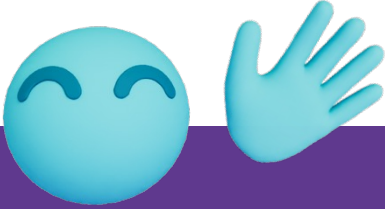




Medical Technologies

Get to know Buddy,
your spirometry coach.



EasyOne Sky

Redefining spirometry with Buddy

The future of spirometry

Say goodbye to challenging spirometry procedures and say hello to Buddy, your partner in spirometry.

Buddy is designed to transform spirometry into a more enjoyable experience for patients and to streamline the process for healthcare providers – lowering the hurdle for high-quality spirometry.

Let **EasyOne Sky** transform spirometry testing into a seamless and enjoyable part of patient care.



Scan the QR code
to see Buddy in
action.



Limitless. *EasyOne Sky*.

Hi, I am Buddy, your spirometry coach.

I am here to help you...

- demonstrate how to do a great test
- coach your patients
- give feedback
- obtain reliable and high-quality spirometry test results



Specifications

Test types: FVC, FVL, Pre/Post-testing

Languages: English, Spanish

Dimensions: 4.3" x 3.3" x 1.3", 4.9 oz / 111 x 84 x 33 mm, 140 g

Parameters: BEV, FEF₂₅, FEF₂₅₋₇₅, FEF₅₀, FEF₇₅, FET, FEV_{0.75}, FEV_{0.75}/FVC, FEV₁, FEV₁/FVC, FEV₁Q, FIVC, FVC, PEF, PIF, FVC %change, FEV1 %change

Predicted normal values spirometry: GLI (Quanjer) 2012, NHANES-III (Hankinson) 1999, Global GLI (Bowerman) 2023

Data management:  EasyOne Mobile

App compatibility:  Windows  Download on the App Store  GET IT ON Google Play

Article numbers *

2800-1D EasyOne Sky incl. BLE Dongle for PC use

2800-1M EasyOne Sky

2800-50.1sp EasyOne Sky BLE Dongle

5050-50 EasyOne FlowTube box of 50

5050-200 EasyOne FlowTube box of 200

5050-500 EasyOne FlowTube box of 500

* Not available in all countries



Medical Technologies

n d d Medical Technologies
300 Brickstone Square, Suite 604 Andover, MA, 01810 USA
Phone: +1 978 470 0923

n d d Medizintechnik AG
Technoparkstrasse 1, CH-8005 Zurich, Switzerland
Phone: +41 44 512 65 00




TrueFlow
makes the difference

n d d's unique ultrasonic flow measurement is highly accurate in all flow ranges, independent of gas composition, pressure, temperature and humidity.

n d d **TrueFlow** is a hygienic and resistance-free solution that does not require calibration during its lifetime.


n d dCloud
simplifying workflows

n d d's modern and secure connectivity solution is designed to connect to healthcare platforms and EHR/EMR systems. It is built on state-of-the-art cybersecurity standards.

SCAN ME



ID: LP-000014 Rev: 01
© Copyright 2024. All rights reserved