



Medical Technologies

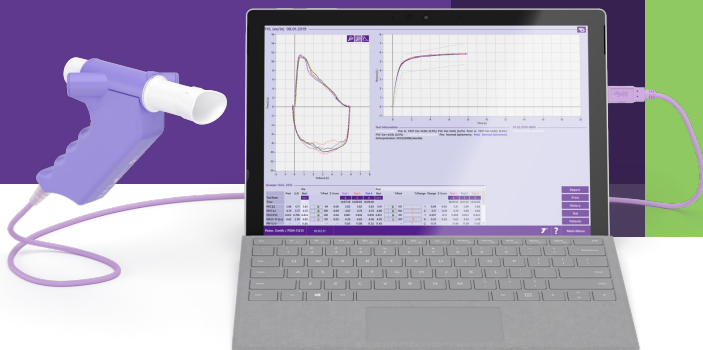
Easy-on PC

PC spirometer

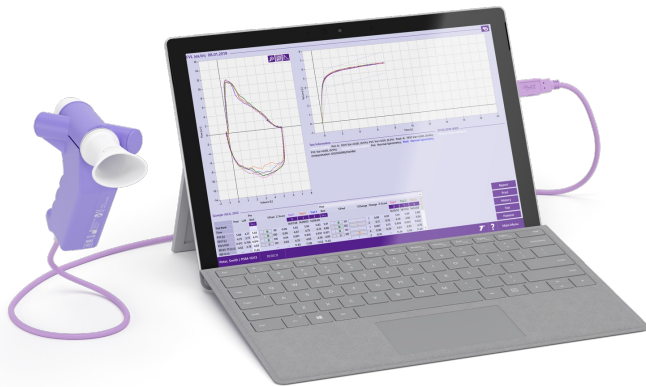
Connecting patients to precise pulmonary care

n d d's PC-driven spirometer employs the interactive EasyOne Connect software to deliver rapid, accurate and reliable results. With compelling features such as live curve visualization, animated incentives and integration with leading EMR/EHR systems, the Easy-on-PC is the clear choice for PC-connected spirometry.

n d d's patented TrueFlow technology eliminates the necessity for calibration, saving time while producing precise and dependable results.

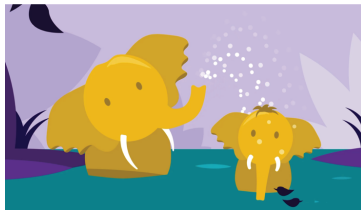


Simple. Certain. Proven.



Incentive screens

Available with **EasyOne Connect** software



Specifications

Test Types: FVC, FVL, SVC, MVV, Provocation and Pre/Post testing

Languages: Chinese, Croatian, Danish, Dutch, English, Finnish, French, German, Italian, Japanese, Norwegian, Portuguese, Russian, Spanish, Swedish, Turkish, Vietnamese

EMR connectivity: HL7, XML, GDT, API

Standards: ATS/ERS 2022, 2019 and 2005, NIOSH, OSHA, SSA Disability

Requirements to system (PC):

Memory: Hard disk: 1 GB (Software), 4 GB (database), RAM: 2 GB

Operating systems: Windows 7, Windows 8 and 8.1 (32 bit and 64 bit), Windows, 10 (32 bit and 64 bit), Windows 11

Article numbers

2700-3:	Easy on-PC spirometer
2700-OCC	Easy on-PC occupational health spirometer kit (sold in the United States only)
2050-1:	Spirette box of 50
2050-5:	Spirette box of 200
2050-10:	Spirette box of 500 Not available in all countries



Medical Technologies

n d d Medical Technologies
300 Brickstone Square, Suite 604 Andover, MA, 01810 USA
Phone: +1-978-470-0923

n d d Medizintechnik AG
Technoparkstrasse 1, CH-8005 Zurich, Switzerland
Phone: +41 44 512 65 00



Features

- Real-time animated incentives
- Proven integration with top EMR/EHR systems
- Long-term trending of results
- Automated quality feedback and interpretation
- Intuitive software interface
- Integrated provocation test with customizable protocols
- Wide range of selectable predicted values
- Calibration-free technology

n d d TrueFlow
makes the difference

n d d's unique ultrasonic flow measurement is highly accurate in all flow ranges, independent of gas composition, pressure, temperature and humidity.

n d d **TrueFlow** is a resistance-free solution that does not require calibration during its lifetime.

EasyOne Connect

EasyOne Connect software offers one database and one platform for EasyOne point-of-care solutions. Data management has never been easier.

SCAN ME

